



## Tournaments, Fundraisers and Food!

Lots going on at Nittany for the last week of April and coming into May. Don't miss any of it!

The course will be closed on Saturday, April 27, from 9 a.m. to 2 p.m. due to the Nennie Tournament in memory of Jenn Myers who was extremely involved in Nittany, not only as creator and editor of the newsletter but also as the organizer of many successful social events.

Proceeds from the tournament go to the Nennie Foundation, supporting family members of cancer patients to help with ancillary costs not paid by insurance. The tournament is full, but to make a contribution go to [www.nenniefoundation.org](http://www.nenniefoundation.org). It is a 501c3 which allows for all contributions to be tax deductions to contributors.

I encourage you to not miss out on Chef Mike's specials as they change weekly. The special last week was Cider Braised Pork Cheek with scallion mashed potatoes and sauteed spinach. It was a busy Thursday night and partly thanks to the Thursday Evening Men's League participants the special regrettably ran out before Friday. Rumor has it it only two lucky people got to have it on Friday!

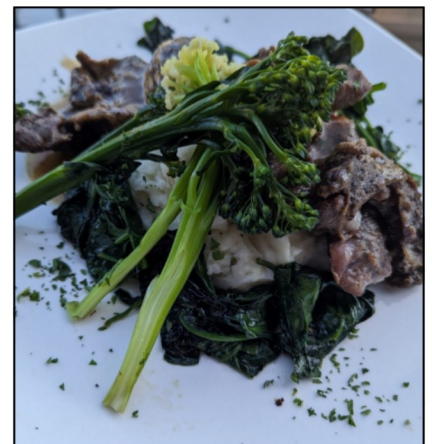
Way to go Chef Mike! Stop by the Grill Room this week to be treated to what the Chef's got cookin'!

If there is anything you would like to see in the newsletter contact Bikem Oskin at [bikem523@gmail.com](mailto:bikem523@gmail.com).

### WHAT'S INSIDE

- New Members
- League News
- Tournaments
- Weekly Food Special
- From the Board

*What you missed  
at the Club last week ...*



*Cider Braised Pork*

# New Member

## First Year Family Golf

**Ryan and Courtney Filla**

**Thomas and Susan McCool**

**Justin and Jennifer Niessner**

## Young Adult Family Golf

**Andrew and Morgan Rosenberger**

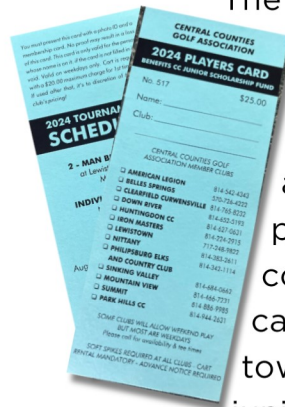
## The Greens

On Monday, April 15th volunteers helped to aerate the greens. With the help of the rain a few days later the greens should be in great shape so come out and play and maybe try out one of our leagues. See the League Schedules below.

## Central Counties Cards

The Central Counties Golf

Association cards are available in the Pro Shop. The cards are \$25 and allows members to play at Central Counties courses for the price of a cart fee. The \$25 goes toward scholarships for junior golfers.



## From the Board

### COMMITTEE CHAIRS

The following are the Board Members Committee assignments confirmed at the April Board Meeting

Ken Bean - Finance Chair

Jake Corman - Membership Chair

Brad Fritchman - Maintenance Chair

Susan James - Event, Social, and Correspondence Chair

Pat Kelley - Pool Chair

Nikki Lucas - House Chair

Jeff Ort - Greens Chair

Skip Reichert - Long Range Planning Chair

Barb Roberts - Golf Chair

### POOL UPDATE

It is anticipated that the pool will be open by Memorial Weekend, however, the opening can not be confirmed until mid-May when the pool is refilled and the water quality is verified.

## Email Issues?

NCC has been notified that some NCC emails go into the GMAIL *PROMOTIONS* folder instead of *INBOX*.

If you think you have missed some emails, please check your *PROMOTIONS* tab in the top row and if you see any emails from nittanycountryclubnews@gmail.com, move them over into *PRIMARY* and future ones should not go into *PROMOTIONS*.

Andrew also sends emails regarding golf updates and those will have his name as sender and alerts about kitchen news will come from Nittany Country Club Kitchen.



---

# Grill Room Features

Grill Room hours are

**Monday through Friday 3 p.m. to close**

**Saturday 11 a.m. to 8 p.m.**

*(Grill Room only/no kitchen)*

**Sunday 11 a.m. to 6:30 p.m.**

*(Grill Room only/no kitchen)*

(814) 383-2321 during open hours

## DRINK SPECIAL

### The Nennie Grande Mojito - \$10

Every Mojito bought \$3 goes to the foundation.

## MONDAY

Special Burgers Night with an extra Special Burger in addition to other burgers and regular menu.

### Pimento Burger - \$10

6 oz burger, pimento cheese, burger bun, lettuce, tomato, marinated onions, pickle.

## WEDNESDAY

Homemade Focaccia Bread Pizza Special in addition to other focaccia bread pizzas and regular menu.

### Spinach Artichoke

Spinach, Grilled Artichoke Hearts, White Sauce

## THURSDAY & FRIDAY

In addition to other burgers and regular menu.

*Dinner Entree*

### Fried Calamari Salad - \$14

Mixed Greens, Shallot, Tomato, Cucumber, Parmesan, Italian Dressing.

*Soup Special*

### Italian Turkey Vegetable

Broccoli, cauliflower, carrots, onions, pinto beans.

*The Grill Room may close if there are less than four members in the Grill Room after the kitchen closes. A reminder to members, guests and public: Due to PLCB regulations/restrictions only members may purchase alcohol and absolutely no outside alcohol may be brought onto the Club property by members or non-members.*

## Burger Menu

*All burgers include Chips*

### Traditional Burger - \$10

6 oz. Burger, Burger Bun, Choice of American, Pepper Jack, Swiss or Cheddar Cheese, Tomatoes, Marinated Onions.

### Slider Basket - \$6

Two Sliders, Shredded Lettuce, Tomato, Mayo, Pickle, House Cut Fries.

### Patty Melt - \$10

6 oz. Burger, Rye Bread, Swiss Cheese, Grilled Onions, Thousand Island, Pickle

### Tex-Mex - \$10

Southwest Seasoned 6 oz Burger, Burger Bun, Jack Cheese, Pickled Jalapenos, Lettuce, Tomatoes, Marinated Onions, Pickle.

### Hot Honey Burger - \$10

Dry Rubbed 6 oz. Burger, Burger Bun, Tempura Cheese Bites, Hot Honey, Lettuce, Tomatoes, Marinated Onions, Pickles.

## Focaccia Pizza

*Personal pan pizza made on homemade Focaccia*

### Pepperoni - \$10

House Made Marinara, Mozzarella Cheese, Pepperoni.

### Chicken Jalapeno Ranch - \$10

Cilantro Lime Ranch, Mozzarella Cheese, Chicken Confit, Pickled Jalapeno.

### Salami and Giardiniera - \$10

House Made Marinara, Mozzarella Cheese, Salami, Mild Giardiniera.

# Tournaments



Events outside of NCC

## Events at NCC with course closures

Tournament descriptions will be posted on the NCC website, in the grill room and in the pro shop.

### April

Sat, 27th **The Nennie Foundation Tournament (Jenn Myers Memorial Scramble (course closed 9 a.m. to 2 p.m.))**

### May

Sat, 4th **Men's Central Counties Better Ball @ Mountainview**

Sat, 11th **Nittany Invitational**

Tue, 14th NCC Women's Kick Off Scramble at 4 p.m.

Sat, 18th **BJ Wetzler Tournament (course closed)**

Sat, 25th Memorial Day Tournament / Tee times

Sun, 26th **Memorial Day Tournament 1 p.m. Shotgun (course closed from 1-6 p.m.)**

Mon, 27th Qualifying begins for July 4th Tournament

Fri, 31st Practice Round for Men's CC @ Nittany

### June

Sat, 1st **Men's Central Counties Team / Individual @ NCC / Tee times (course closed)**

Sun, 2nd **Men's Central Counties Team / Individual @ NCC / Tee times (course closed)**

Mon, 3rd Qualifying begins for July 4th Tournament

Sat, 8th **Lions Club Tournament (course closed from 8 a.m. to 1 p.m.)**

Tue, 11th **Women's Central Counties @ Nittany (course closed from 8 a.m. to 4 p.m.)**

Fri, 14th **Bellefonte Football (course closed from 8 a.m. to 1 p.m.)**

Sat, 15th The Dobson Tip-Off

Tue, 25th **Women's Central Counties at Belles Springs**

### July

Wed, 3rd July 4th Social

Thu, 4th July 4th Tournament

Sat, 6th July 4th Tournament

Sun, 7th July 4th Tournament

Fri, 12th **Nittany Senior Open / Course closed**

Sat, 13th **Challenge Cup @ Philipsburg Elks**

Tue, 16th **Women's Central Counties @ PO**

Sat, 27th **DC Open (course closed)**

Sun, 28th **DC Open (course closed)**

Mon, 29th Qualifying begins for Labor Day Tournament

### August

Fri, 2nd Member Guest / 2 Divisions

Sat, 3rd **Member Guest / 2 Divisions / (course closed Sat & Sun)**

Sun, 4th **Member Guest / 2 Divisions / (course closed Sat & Sun)**

Mon, 5th **Central Counties Junior Championship @ Huntingdon**

Sat, 10th Gross / Net / Senior Championship

Sun, 11th Gross / Net / Senior Championship

Sat, 17th **Wrestling Tournament**

**(course closed from 8 a.m. to 1 p.m.)**

Sun, 25th Qualifying ends for Labor Day Tournament

Wed, 28th Play-off for Labor Day Tournament (top 16)

Thu, 29th Labor Day Social

Fri, 30th Labor Day Tournament

Sat, 31st Labor Day Tournament

### September

Sun, 1st Labor Day Tournament

Mon, 2nd Labor Day Tournament

Fri, 6th **Krislund Tournament / (course closed from 8 a.m. to 1 p.m.)**

Sat, 14th **Central Counties Pro Am at Iron Masters**

Sun, 15th **Central Counties Pro Am at Iron Masters**

Sun, 22nd **Seniors Central Counties at Park Hills**

### October

Sun, 6th President's Cup

# League News

## WEEKLY LEAGUES

NCC Weekly Leagues are open to all member golfers. No RSVPs necessary. This is a great opportunity to play some fun golf and socialize afterwards.

Handicaps are encouraged but not necessary as they will be assigned. Your membership in NCC includes access to the USGA GHIN system to establish handicaps. Ask the Pro Shop Staff about the GHIN system.



### Men's Tuesday Afternoon 18-hole League

Meet at 11:30 a.m. for noon start.

Contact Pete Brown

[petebarbbrown@gmail.com](mailto:petebarbbrown@gmail.com)

### Women's Tuesday Afternoon 9-hole League

Meet at 3:15 p.m. for a 3:30 p.m. start.

Contact Betty McKinley

[nittanycountryclubnews@gmail.com](mailto:nittanycountryclubnews@gmail.com)

### Women's Thursday Morning 18-hole League

Starting date, time and format will be decided at the May 14 Kickoff.

### Men's Thursday Evening 9-hole League

Meet at 5:15 p.m. for a 5:30 p.m. start.

Darts will be played

if golf is cancelled due to weather.

Contact Jim Galio [james.galio@outlook.com](mailto:james.galio@outlook.com)

For the ladies who can't attend the day leagues and if you are interested in a 6 p.m. or later Tuesday Evening League contact Lorraine Mulfinger at [lmulfinger@gmail.com](mailto:lmulfinger@gmail.com).

*Thank you for reading!*



**NITTANY**  
C O U N T R Y C L U B



110 Country Club Drive  
Mingoville, PA 16856



Pro Shop (814) 383-2611  
Grill Room (814) 838-2321